



Lisson Grove, Marylebone, London, NW1

£495 Per Week

Contact us about this property

337 West End Lane, West Hampstead, London, NW6 1RS

E: nw6@alexanders-uk.com

T: 0207 431 0666

www.alexanders-uk.com

Alexanders

Property Consultants



About This Property


Newly renovated this first floor furnished flat is ideally located close to Marylebone station and Regents Park. The apartment features an entrance hall, open plan reception room with fitted kitchen, double bedroom to rear with built in storage and modern bathroom.

The property further benefits from wood floors throughout, high ceilings and tall windows providing excellent natural light.



Alexanders

Property Consultants

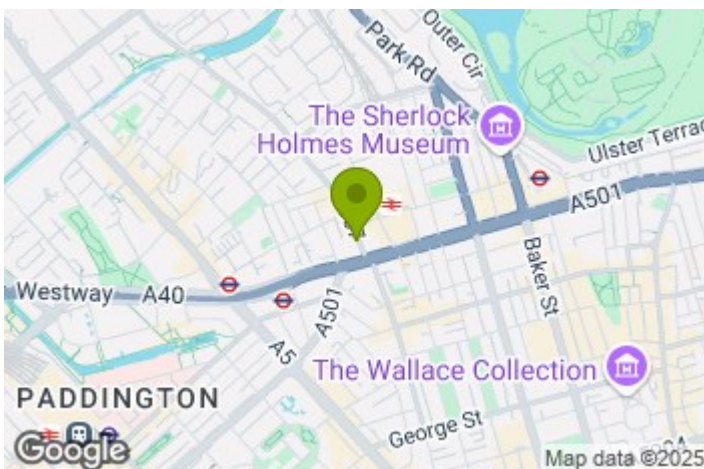
 1 Bedroom |  1 Reception |  1 Bathroom |  67 D

Property Features

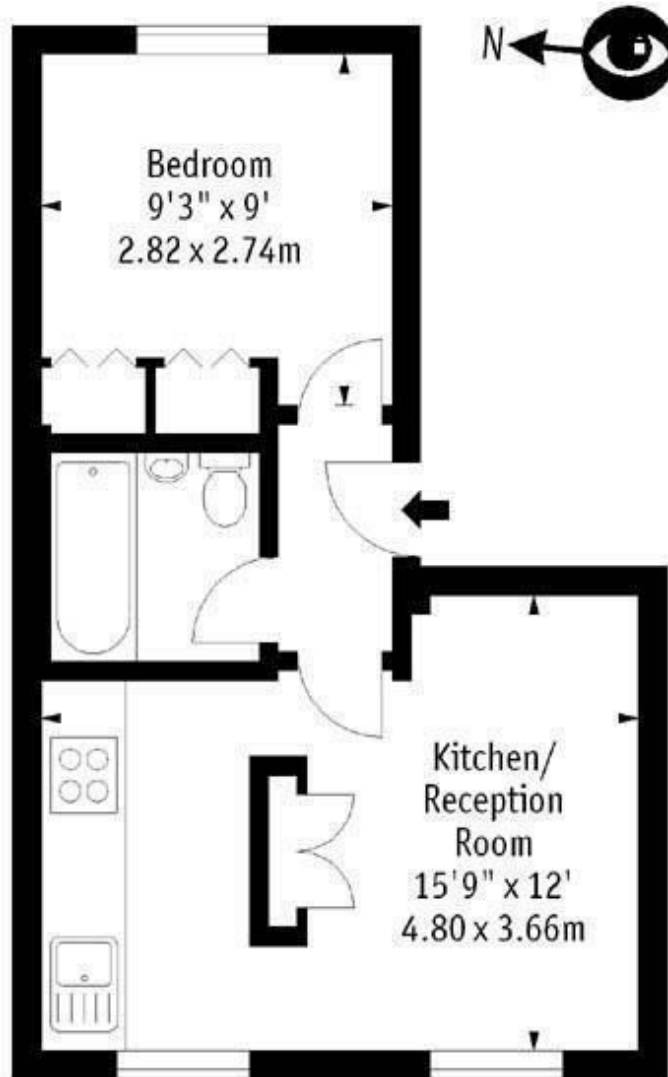
- Newly renovated
- 1 double bedroom
- Modern fitted kitchen
- Open plan living room
- Modern bathroom
- Large windows
- Excellent natural light
- Moments to Marylebone station
- Close to Regents Park

Property Size

319.00 sq ft



Lisson Grove, NW1



First Floor

Approx Gross Internal Area **319 Sq Ft - 29.64 Sq M**

For Illustration Purposes Only - Not To Scale
Floor Plan from www.BigPropertyMarketing.com

[Contact us about this property](#)

337 West End Lane, West Hampstead, London, NW6 1RS

E: nw6@alexanders-uk.com

T: 0207 431 0666

www.alexanders-uk.com